

Droppers

Hot rolled Droppers for Fencing Applications

General description

ArcelorMittal South Africa, Newcastle Steel produces droppers in 10mm sizes. This data sheet contains only the standard manufactured specifications.

Steel specifications

The steel is produced through the Blast furnace process route and supplied according to the chemical composition below as shown in table 1 below.

Elemets	C	Mn	P	S	Si	Cu	Cr	Ni	V	Al
Specifications	0,15/ 0,67	0,5/ 1,8	0,07 max	0,50x	0,15/ 0,21	0.1 max	0,1 max	0,1 max-	0,1 max	0,1 max

1. The silicon content makes it suitable for galvanising.
2. No mechanical test specification for droppers

Drawing

The profile for droppers is rolled according to the drawing in Figure 1 in Appendix 1.

Bundling Lengths:

Lengths are securely tied in bundles normally containing a standard number of bars per size and length. Bundles are secured with wire ties or steel straps depending on bar diameter, two adjacent straps approximately 150 - 250 mm from each end and intermediate straps at approximately 1,5 meter intervals.

Standard lengths and Mass

Cutting tolerance: -0+50 mm

Lengths from 6m up to 13 meters in increments of 100 mm can be ordered.

The bundles are form 1.5T to 2.5 T for droppers

Basis for invoicing

Invoicing is based on theoretical mass

Labels and marking

One polyester label on a metal backing will be tied to each end of the coil/bundle by means of wire ties or laced to bundle straps at the works' option.

For further information, contact:

ArcelorMittal Steel South Africa Limited, Newcastle Steel, PO Box 2, Newcastle 2940. Tel (034) 314-8629 Fax (034) 314-8211 e-mail address: enquiries.newcastle@arcelormittal.com

Care has been taken to ensure that the information in this data sheet is accurate. ArcelorMittal Steel South Africa Limited does not, however, assume responsibility for any inaccuracies or misinterpretations of this data. We are continuously engaged in product development and revised data sheets will be issued from time to time. Please ensure that you have the most recent issue. **Effective date: January 2006**

Coloured metal backings are available in: white, blue, green, purple, grey, brown, orange, pink, black, beige, light green, light blue and red.

Where no metal backing colour is specified on orders, white labels will normally be used at the works' discretion.

Labels will bear information to a maximum of four lines with a maximum of forty-five characters per line.

The following standard information will normally be stated:

- ArcelorMittal Steel South Africa's order confirmation number
- Customer's order number/mark
- Port of destination (export)
- Cast number
- Steel specification, grade and size
- Bundle mass
- Bundle number (also printed on bar code)

For further information, contact:

ArcelorMittal Steel South Africa Limited, Newcastle Steel, PO Box 2, Newcastle 2940. Tel (034) 314-8629 Fax (034) 314-8211
e-mail address: enquiries.newcastle@arcelormittal.com

Care has been taken to ensure that the information in this data sheet is accurate. ArcelorMittal Steel South Africa Limited does not, however, assume responsibility for any inaccuracies or misinterpretations of this data. We are continuously engaged in product development and revised data sheets will be issued from time to time. Please ensure that you have the most recent issue. **Effective date: October 2005**

APPENDIX 1

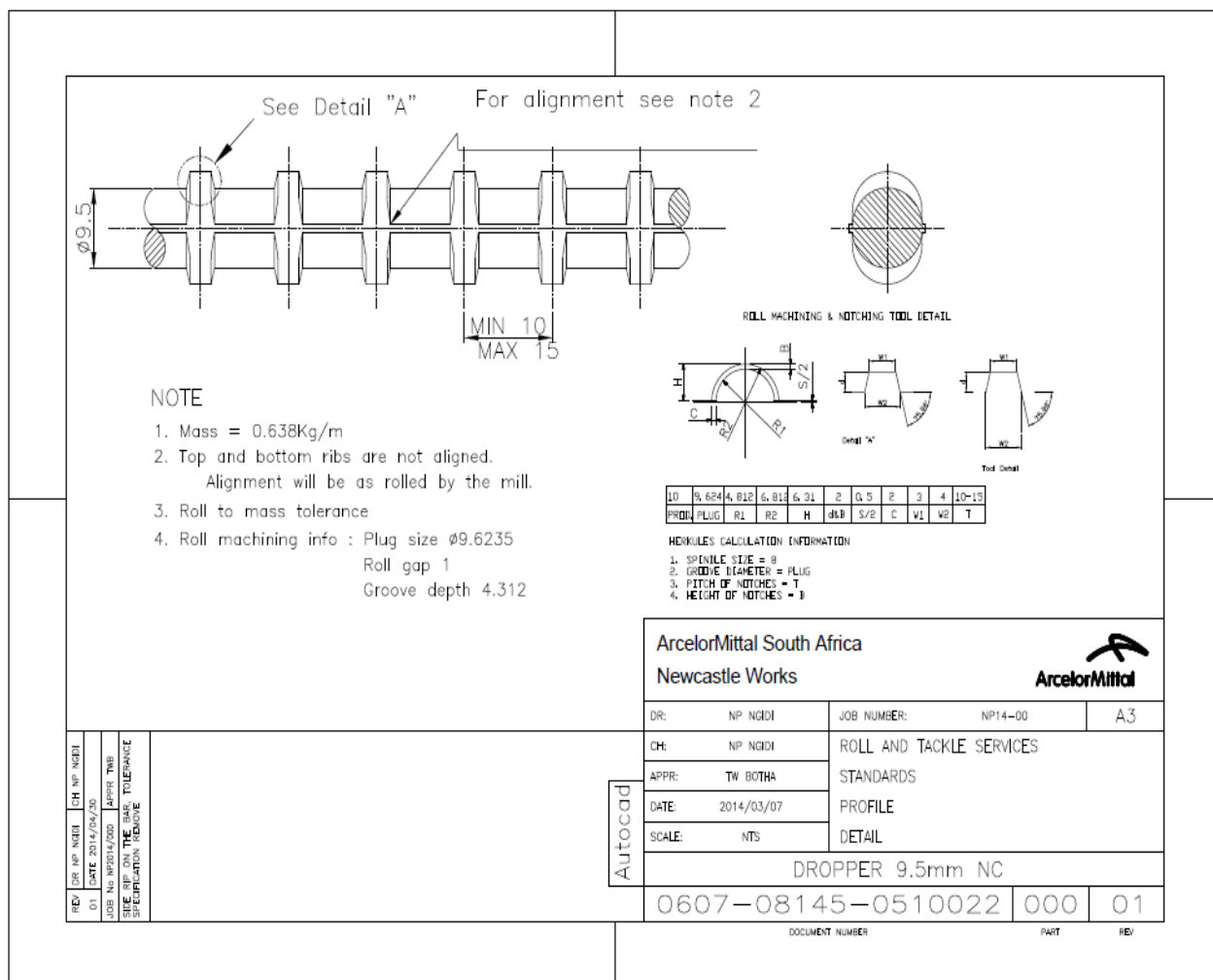


Figure 1 Drawing for 10mm droppers

For further information, contact:

ArcelorMittal Steel South Africa Limited, Newcastle Steel, PO Box 2, Newcastle 2940. Tel (034) 314-8629 Fax (034) 314-8211
e-mail address: enquiries.newcastle@arcelormittal.com

Care has been taken to ensure that the information in this data sheet is accurate. ArcelorMittal Steel South Africa Limited does not, however, assume responsibility for any inaccuracies or misinterpretations of this data. We are continuously engaged in product development and revised data sheets will be issued from time to time. Please ensure that you have the most recent issue. **Effective date: October 2005**